

NINA 250 - NINA 300

MECHANICAL SEED DRILL, TRANSPORT WIDTH 2.50/3.00 m (cereal- colza)



Suffolk coulters



Single disc with adjustable depth limiter (supplied disassembled)



COREX DISC

STANDARD EQUIPMENT

Conventional mechanical seed drill
Three point hitch, cat. II
Dosing roller for small and large seeds
Infinite gearshift with 3 oil-cooled cams
Wheels 6.50-15 with mud scrapers
Fast suffolk replacement
Hopper capacity:
NINA 250 410 liters
NINA 300 500 liters
Tractor hydraulic distributors required: at least 1
Calibration and emptying tray
Anti suffolk clogging protection
Mechanical centralized coulters pressure adjustment
Seed box level indicator
Single transmission
Seed hopper agitator exclusion

Half machine shut-off
Lighting kit (disassembled)
Warning boards (disassembled)
Seed covering harrow with spring adjustment and platform (disassembled)

Row marker (not included)

FAST DEPTH ADJUSTMENT

	<p>SUFFOLK Unit suitable on land prepared with traditional techniques and with scarce residues on surface. This unit, arranged on wide spaced rows, allow to avoid any soil clogging.</p>	
	<p>SINGLE DISC A universal match for very variable soil conditions, even with abundant crop residues. The depth control is made by an adjustable limiter or a rubber wheel. The disc rotation prevents the straw tracking, while the special rotary rubber scraper always keep the disc clean even when working on muddy soil.</p>	
	<p>DISCO COREX Element suitable for loose soils even with abundant residual. Thanks to the particular disc "lemon" shape, the deposition of the seed occurs always at the same depth; avoiding excessive sinking or ground shifting.</p>	



Fast depth adjustment

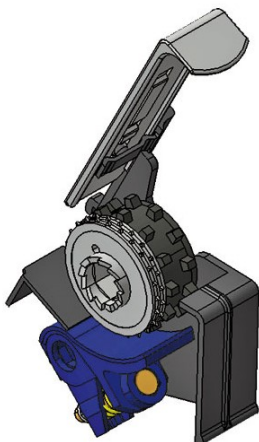
Seeding depth can be quickly adjusted through a mechanical or hydraulic system acting on sowing bar angle.

GASPARDO GEARBOX - EASY AND PRECISE



GASPARDO gearbox - Easy and precise

- Our 3 cam transmission design allows us to acquire maximum accuracy versus many competitors that have a two cam design.
- Calibration is very time saving using our one handle lever to set the rate.
- All of our cams and bearings on the gearbox run in an oilbath so that you do not have to worry about greasing them.



Multipurpose seed distributor

Distribution unit has a very simple design and can be adapted to many different crops. Passing from large to smaller seeds is easy as excluding larger seeds ring. Adjustable spring feeler is very gentle with seed and preserves its viability for the best success of planting operation.

CEREAL SEED DRILLS

PNEUMATIC DISTRIBUTION: UNIFORMITY IN ANY CONDITION

FLE X EED



THE RIGHT ROLLER FOR EACH CROP

The exclusive GASPARDO FLE X EED distributor always ensures a uniform and precise metering of seed: compared to other systems on the market it acts varying its revolution speed in proportion to the operating speed. Its drive can be dependent on a mechanical gearbox connected to a contact wheel or by an electric transmission (GENIUS and GENIUS LITE systems). The aluminium cast body and the roller plastic material guarantee durability and corrosion resistance.

Big diameter rollers allow to have a revolution speed reduced to guarantee an even distribution. The cells have a helical arrangement to avoid the effect of a "pulse" (handfuls of seed) ensuring a greater distribution uniformity. Many rollers are available depending on the type of seed.



G1000

Large quantity roller

For large rates per hectare or big sized seeds (up to 400 Kg / ha). Also available in special versions for rice and slope lands.



N500 - N250

Cereals roller

Ideal for sowing autumn cereals (N500: up to 200 kg / ha) or for drills operating at reduced speed (N250: up to 80-100 Kg / ha).



F25 - 125

Small seeds roller

Thanks to the possibility to exclude sectors of the roller; even with low investment you can always have a homogeneous distribution

DABS Ltd, P.O. box 78037, Dar es Salaam

Phone +255 717593542

www.danagrisol.com

NINA 250 - NINA 300

Version	Model	Row spacing cm	Frame cm	Weight kg	Code	Price €
NINA 250-300 EQUIPPED WITH SEED COVERING HARROW AND FOOTBOARD						
SUFFOLK COULTERS	NINA250 - 17 R	15	250	559	G92817211	7 800
	NINA250 - 19 R	13	250	569	G92819211	8 110
	NINA250 - 21 R	12	250	579	G92821211	8 420
	NINA300 - 19 R	16	300	624	G92919211	8 605
	NINA300 - 21 R	14	300	634	G92921211	8 915
	NINA300 - 23 R	13	300	644	G92923211	9 225
	NINA300 - 25 R	12	300	654	G92925211	9 535
SINGLE DISC	NINA250 - 19 R	13	250	628	G92819214	10 675
	NINA250 - 21 R	12	250	647	G92821214	11 255
	NINA300 - 21 R	14	300	693	G92921214	11 750
	NINA300 - 23 R	13	300	708	G92923214	12 330
	NINA300 - 25 R	12	300	729	G92925214	12 910
COREX DISC	NINA250 - 17 R	15	250	640	G92817212	10 095
	NINA250 - 19 R	13	250	657	G92819212	10 675
	NINA250 - 21 R	12	250	678	G92821212	11 255
	NINA300 - 19 R	16	300	702	G92919212	11 170
	NINA300 - 21 R	14	300	724	G92921212	11 750
	NINA300 - 23 R	13	300	743	G92923212	12 330
	NINA300 - 25 R	12	300	766	G92925212	12 910

Also available COMBI SEED drill—cultivate and plant at the same time

DAMA DRAGO DC COMBI

66-110 kW (90-150 HP)
COMBINATION POWER HARROW - MECHANICAL SEED DRILL FOR
CEREALS (cereals-rape)



Suffolk coultter



Corex disc with dept wheel kit (optional)



Single disc with adjustable depth limiter (depth wheel optional)

HARROW

MACHINE BODY

540/1000 rpm PTO gearbox - default 1000 rpm
Pair of standard gears: 17-23
Rotor revolution PTO 540 rpm (2s): 353-193
Rotor revolution PTO 1000 rpm (1s): 357
PTO shaft with slip clutch (1" 3/8 26 tractor side yoke)
Round blade-holders
Heavy duty gear-tray with double reinforcement
Swinging side protections
Universal three point hitch, cat. II^A
Speed lift linkage
Rear PTO
2 blades per rotor
«CE» safety guards
ROLLER
Roller pin adjustment applied on top of the transmission case
Rear levelling bar mounted on roller, with mechanical central adjuster

SEED DRILL

Quick hitch for MASCHIO power harrow
Dosing roller for small and large seeds
Infinite gearshift with 3 oil-cooled cams
Seed hopper agitator exclusion
Half machine shut-off
Single transmission
Centralized and single coultter pressure adjustment
Hopper with indicator for seed level check
Calibration control
Calibration and emptying tray
Drive wheel with hand lift and shift for road transport
Suffolk coultters arranged in 3 ranks
Folding inspection footboard
Parking stands
Lighting kit (disassembled)
Warning boards (disassembled)
Seed covering harrow multi control
Hopper load capacity: 410 - 500 l
Tractor hydraulic distributors required: Min 0 Max 3

TECHNICAL DATA

DAMA DRAGO DC COMBI	Working Width		Total Width		ROW SPACING	ROWS DISTANCE	HOPPER CAPACITY
	cm	cm	cm	cm			
2600	66-110	90-150	250	262	125	28	410
3000	88-110	120-150	300	311	150	28	500
3000	88-110	120-150	300	311	150	28	500

DABS Ltd, P.O. box 78037, Dar es Salaam

Phone +255 717593542

www.danagrisol.com